



# Neuron Navigator 2 Polyclonal Antibody

<b>Catalog No</b>	YP-Ab-12763
<b>Isotype</b>	IgG
<b>Reactivity</b>	Human;Rat;Mouse;
<b>Applications</b>	IHC;IF;ELISA
<b>Gene Name</b>	NAV2
<b>Protein Name</b>	Neuron navigator 2
<b>Immunogen</b>	Synthesized peptide derived from Neuron Navigator 2 . at AA range: 2040-2120
<b>Specificity</b>	Neuron Navigator 2 Polyclonal Antibody detects endogenous levels of Neuron Navigator 2 protein.
<b>Formulation</b>	Liquid in PBS containing 50% glycerol, 0.5% BSA and 0.02% sodium azide.
<b>Source</b>	Polyclonal, Rabbit,IgG
<b>Purification</b>	The antibody was affinity-purified from rabbit antiserum by affinity-chromatography using epitope-specific immunogen.
<b>Dilution</b>	IHC: 1/100 - 1/300. ELISA: 1/10000.. IF 1:50-200
<b>Concentration</b>	1 mg/ml
<b>Purity</b>	≥90%
<b>Storage Stability</b>	-20°C/1 year
<b>Synonyms</b>	NAV2; HELAD1; KIAA1419; POMFIL2; RAINB1; STEERIN2; Neuron navigator 2; Helicase APC down-regulated 1; Pore membrane and/or filament-interacting-like protein 2; Retinoic acid inducible in neuroblastoma 1; Steerin-2; Unc-53 homolog 2; unc53H2
<b>Observed Band</b>	
<b>Cell Pathway</b>	Nucleus .
<b>Tissue Specificity</b>	Highly expressed in the brain, kidney and liver. Also expressed in the thyroid, mammary gland, spinal cord, heart, placenta and lung. Abundantly expressed in colon cancers.
<b>Function</b>	alternative products:Additional isoforms may exist,caution:PubMed:15158073 experiments have been carried out in mouse.,caution:The sequence shown here is derived from an Ensembl automatic analysis pipeline and should be considered as preliminary data.,developmental stage:Highly expressed in the nervous system of developing embryos. Also expressed in fetal heart, liver and kidney.,function:Possesses 3' to 5' helicase activity and exonuclease activity. Involved in neuronal development, specifically in the development of different sensory organs.,induction:By all-trans retinoic acid (atRA). Up-regulated in colorectal carcinomas.,similarity:Belongs to the Nav/unc-53 family.,similarity:Contains 1 CH (calponin-homology) domain.,tissue specificity:Highly expressed in the brain, kidney and liver. Also expressed in the



thyroid, mammary gland, spinal cord, heart, placenta and lung. Abundantly expr

#### Background

This gene encodes a member of the neuron navigator gene family, which may play a role in cellular growth and migration. Multiple transcript variants encoding different isoforms have been found for this gene. [provided by RefSeq, Oct 2011],

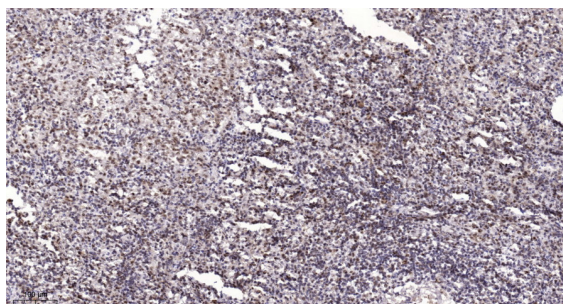
#### matters needing attention

Avoid repeated freezing and thawing!

#### Usage suggestions

This product can be used in immunological reaction related experiments. For more information, please consult technical personnel.

### Products Images



Immunohistochemical analysis of paraffin-embedded human spleen. 1, Antibody was diluted at 1:200(4° overnight). 2, Tris-EDTA,pH9.0 was used for antigen retrieval. 3,Secondary antibody was diluted at 1:200(room temperature, 45min).